

A close-up portrait of a woman's face with her hair pulled back. Three vertical lines are drawn across her face, from the forehead down to the neck, representing the progress of hair removal. The text is overlaid on the left side of her face.

**Venus  
Laser System  
Hair  
removal**

**Brochure**

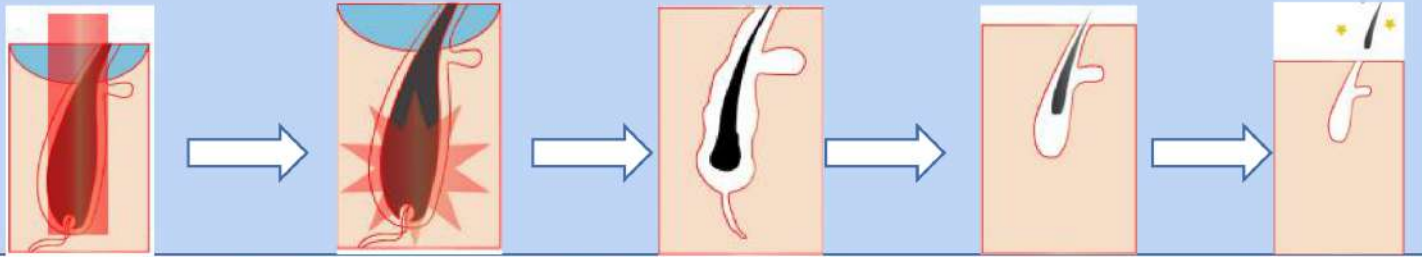
High  
frequency

Highest  
peak power

Shortest  
pulses





# What is Fiber Coupled Diode (FCD) technology?

The light generated by multiple diode laser are coupled into a single-core multimode fiber by micro lens array, in order to deliver light to the target place. This innovative design assures uniform energy distribution, low damage rate, long lifespan and easy maintenance of the diode laser.





# Comparison between Fiber laser and traditional diode laser

	Macro Channel	Fiber Coupled Diode Laser
<b>Laser source</b>	<p>Laser bar stack</p> 	<p>laser emitters coupled with fiber</p> 
<b>Location of laser source</b>	Inside handpiece	In the machine. Light weight handpiece
<b>Energy distributor in each shot</b>	<p>Not uniform, dark area between each beam.</p> 	<p>Very uniform in whole spot, no dark area.</p> 
<b>Laser beam Divergence</b>	Small divergence, laser penetrate deep	No divergence, penetrate very deep
<b>Treatment result</b>	Good, hair pulled off right after treatment.	Excellent, hair pulled off very easily just after shooting.
<b>Life Time</b>	50-100 million shots	150 million shots

# Advantages of Fiber Laser



Light and small handle, easy to operate, and the operator will not feel tired after long treatment time.

Handle color support customization

Sapphire crystal has good light transmission and cooling effect to ensure good results and treatment comfortable

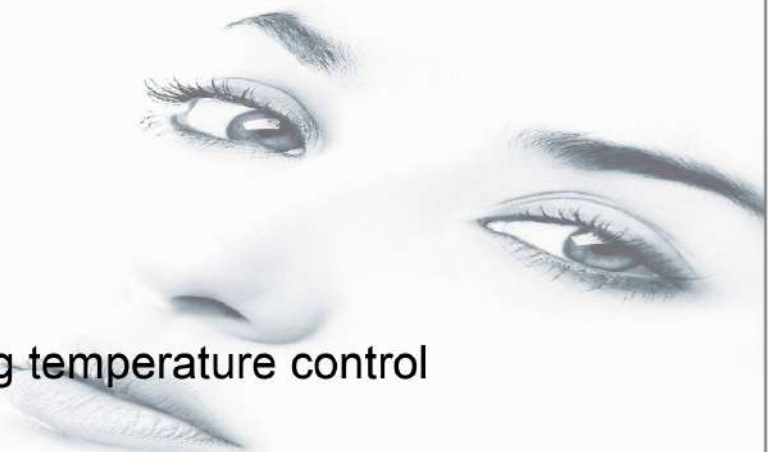


No filter element is needed, normal water is available



Long lifespan, more than 150 million shots

- 12X12mm
- Sapphire Crystal
- Very light
- Intelligent freezing temperature control





# What Fiber laser brings for you



## **The boss's favorite**

Time is money.

24 hours of uninterrupted work, no requirements for water quality, extremely fast heat dissipation



## **The operator's favorite**

Very light when do treatment for long time. So the operator will not feel tired after long treatment time.



## **The patient's favorite**

Efficient and comfortable

No customer will refuse a fast and effective hair removal machine

# Treatment Effect





# Technical Specifications

Laser Type Fiber laser

Wavelength

Laser power

Energy density

Frequency

Pulse width range

Spot size

Cooling system

Package

Power